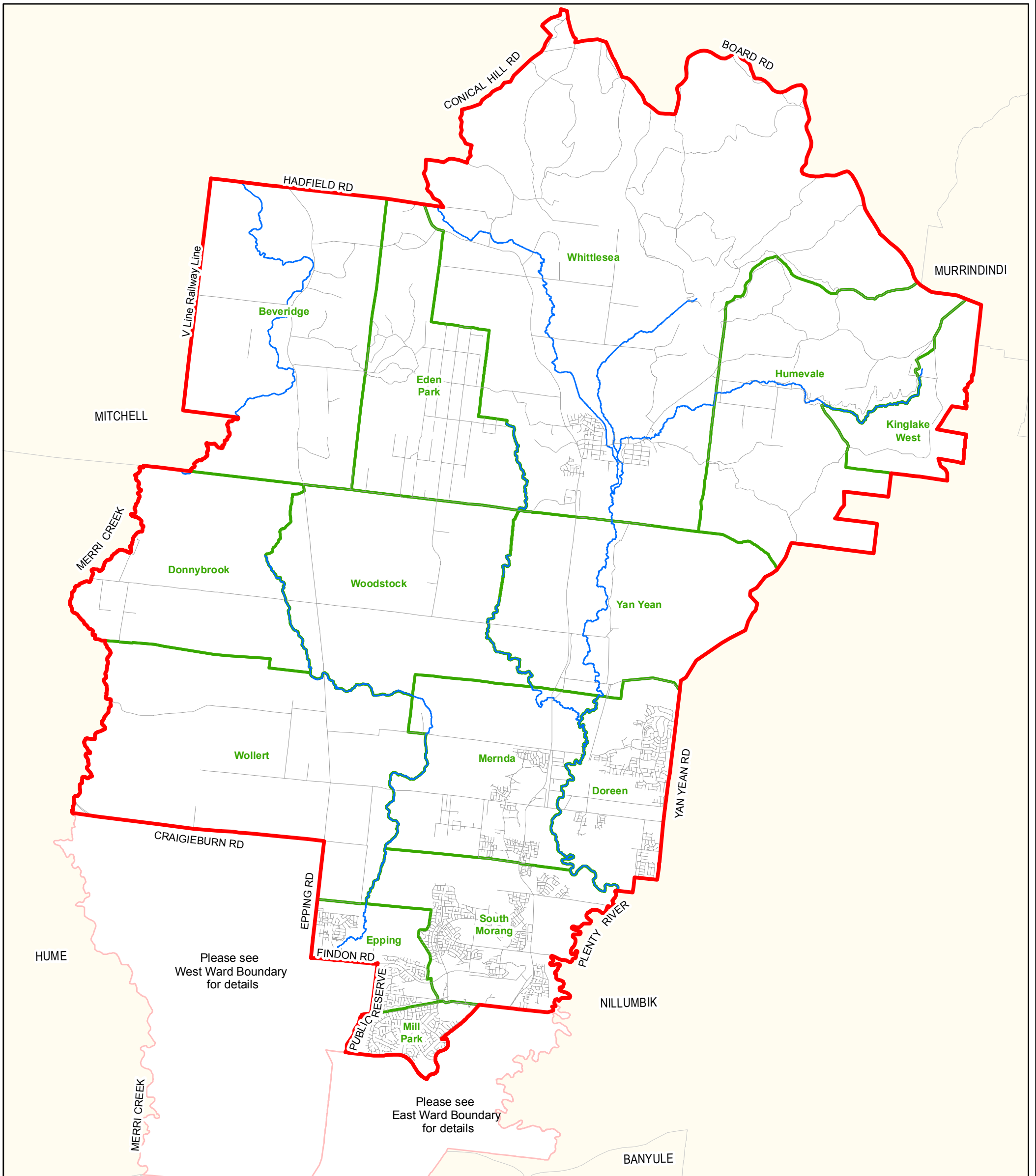
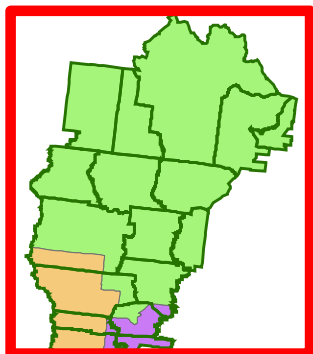


CITY OF WHITTLESEA



Please see West Ward Boundary for details

Please see East Ward Boundary for details



- WARD**
- EAST
 - NORTH
 - WEST

0 10 20 Km

North Ward

Cr John Fry
Cr Rex Griffin
Cr Pam McLeod



0 1 2 3 km



City of Whittlesea
Council Offices
25 Ferres Blvd
South Morang Victoria 3752
Postal: Locked Bag 1
Bundoora MDC 3083
Website: <http://www.whittlesea.vic.gov.au>

Date: June 2009
GIS Department
Tel: (03) 9217 2425
Fax: (03) 9409 9818
gisdept@whittlesea.vic.gov.au



COPYRIGHT © 2009
The State of Victoria and the City of Whittlesea does not warrant the accuracy and completeness of information on this map. The State of Victoria and the City of Whittlesea shall not bear any responsibility or liability for errors or omissions in the information.
Reproduction of the plan is possible only with permission from the City of Whittlesea.