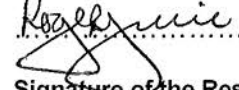
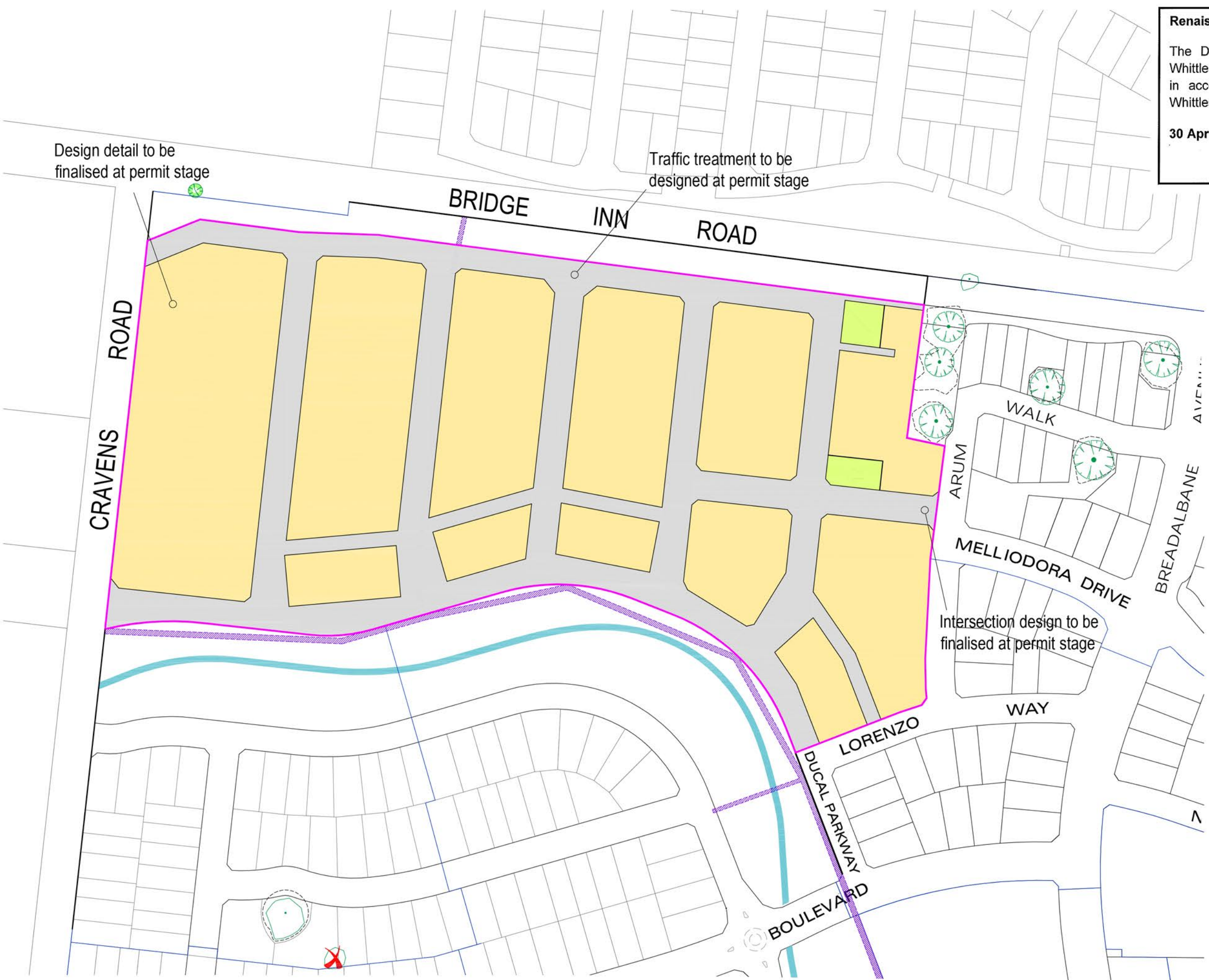


Renaissance Rise II Development Plan (Amended)

The Development Plan was approved by the City of Whittlesea on 6 May 2008 and amended on 29 May 2012 in accordance with Clause 43.04 Schedule 5 of the Whittlesea Planning Scheme.

30 April 2013

Signature of the Responsible Authority



SITE AREA:		9.09ha	
Open Space/Tree Reserve	0.10ha	1%	
Local Roads	2.99ha	33%	
Residential Lots	6.00ha	66%	
TOTAL		9.09ha	
TOTAL RESIDENTIAL		6.00ha	

- PLAN NOTES**
- Site boundary and existing details are based off supplied digital data Data : 553300NT
 - Surrounding boundary information derived from Vicmap data
 - Boundaries and areas shown are subject to survey and design changes may be required to consider onsite features, engineering & consultant advice.
 - Provision of an updated Flora and Fauna and Tree survey for the Development Plan area to the satisfaction of the Responsible Authority as part of any future planning application for the site.
 - Resolution of the dimensions and road cross section details to the satisfaction of the Responsible Authority as part of any future planning permit application for the site.
 - Resolution of a revised drainage scheme for the Development Plan area to the satisfaction of Melbourne Water and the Responsible Authority.