

Small-Scale Commercial Agriculture

Information brochure

*Partner
to Prosper*



The City of Whittlesea supports and encourages the development of sustainable small-scale commercial agriculture businesses in our Rural North.

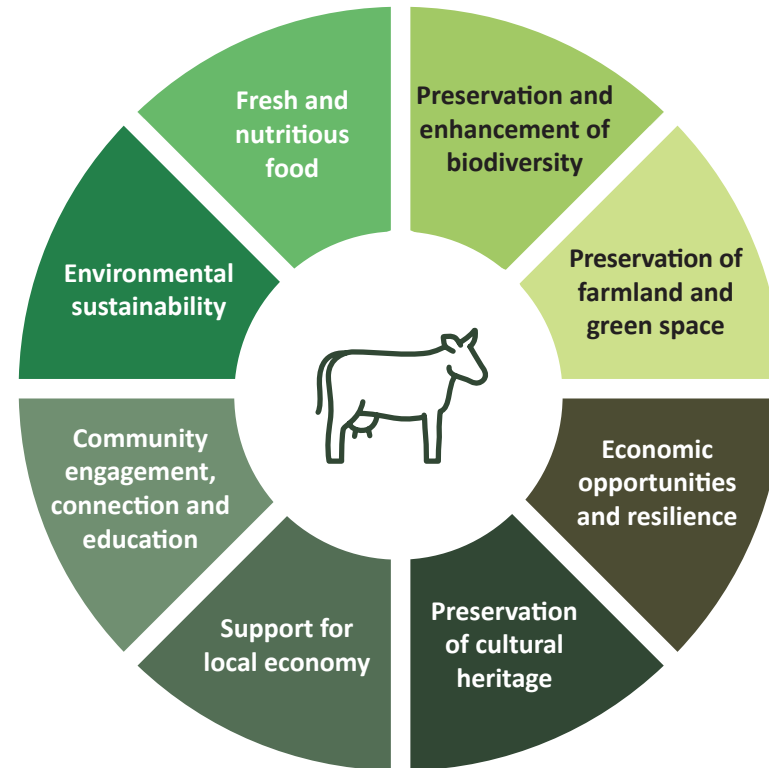
What is small-scale commercial agriculture?

Small-scale commercial agriculture involves agricultural activities carried out for profit on smaller land areas, generally less than 40 hectares.

These activities often apply holistic land management principles, such as permaculture and agroecology, which promote farming practices that support and enhance the surrounding ecosystem and biodiversity.

Using these methods, farmers produce premium, niche products sustainably and ethically. These products are typically sold directly to consumers through local markets, online platforms, farm gates, and similar channels.

Small-scale commercial agriculture plays a crucial role in the local community, providing many benefits that contribute to the overall well-being of the area. Some of these benefits include:

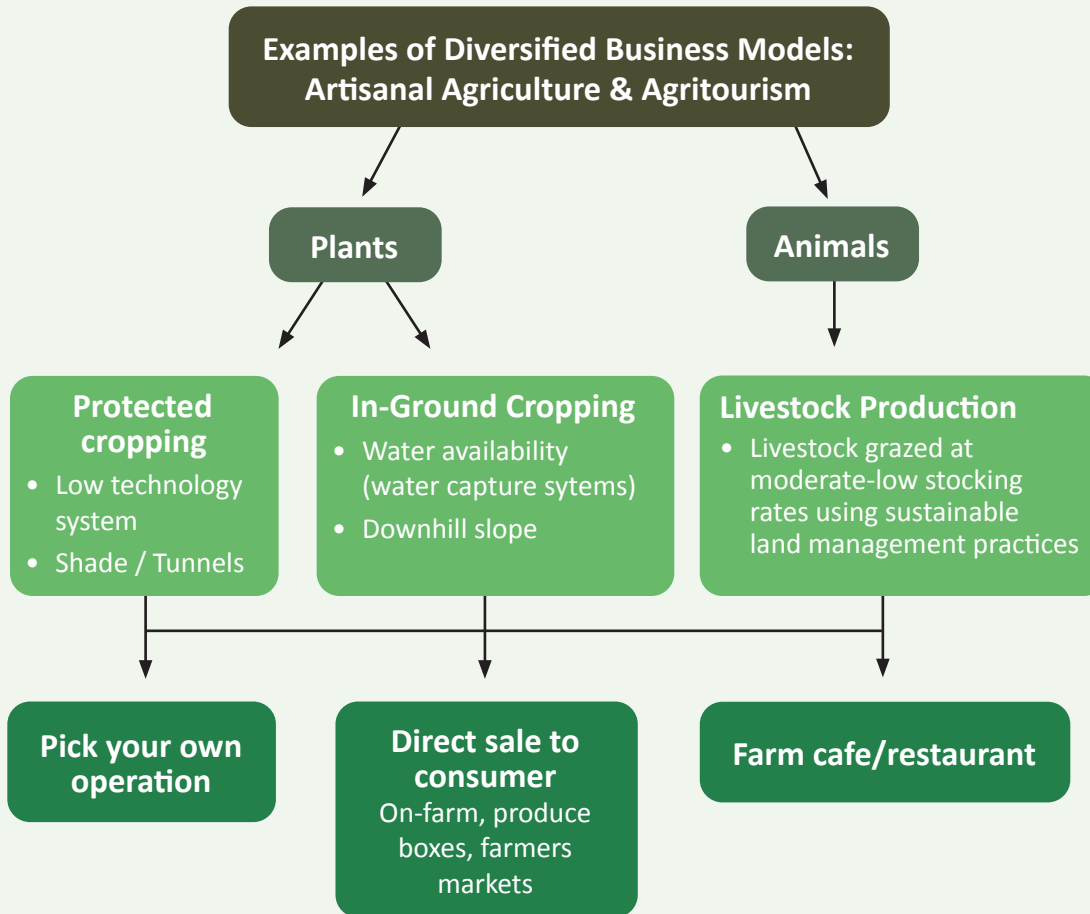


Did you Know?

Small-scale commercial agriculture businesses are often multi-faceted. Many grow fruits and vegetables and/or raise livestock in conjunction with tourism ventures. These businesses provide visitors with an immersive experience and at the same time build an awareness of ethical and sustainable agriculture practices.

Small-Scale Commercial Agriculture Opportunities

Within the City of Whittlesea, a number of valuable opportunities have been identified in the agriculture sector.



* This list is not exclusive and does not incorporate all potential small-scale commercial agriculture opportunities. Some activities may require a permit.



Speak to Council about opportunities for the following activities on your land*

- Agriculture and in conjunction with Agriculture
 - Bed and Breakfast
 - Function Centre
 - Group Accommodation
 - Host Farm
 - Restaurant
- Animal Production
- Apiculture (bee keeping)
- Broiler Farm
- Grazing Animal Production
- Intensive Animal Production
- Poultry Farm
- Plant Nursery
- Primary Produce Sales

Getting started

Valuable resources are available to support you starting, managing or growing your agricultural business

Education

Local institutions offer programs and courses that provide practical experience and skill development in agriculture.

- Melbourne Polytechnic
melbournepolytechnic.edu.au
- RMIT University
rmit.edu.au
- La Trobe University
latrobe.edu.au
- Kangan Institute
kangan.edu.au

Business Assistance

Support and advice are essential for the success of all businesses.

- City of Whittlesea
whittlesea.vic.gov.au/Business
- Victorian Government
business.vic.gov.au
- Federal Government
business.gov.au

Knowledge/Networking

Opportunities to network and engage with like-minded business owners and learn from the experts, are available through these organisations, providing valuable connections and collaborations.

- Agriculture Victoria
agriculture.vic.gov.au
- Young Farmers Network
extensionaus.com.au/youngfarmersnetwork
- Victorian Rural Women's Network
extensionaus.com.au/VRWNetwork



**City of
Whittlesea**

Partner with council to support future growth

The City of Whittlesea is committed to fostering a strong and economically vibrant investment environment where local businesses, partner organisations, and residents can thrive. To have a confidential discussion about starting a small-scale commercial agriculture business within the City of Whittlesea, or to learn about the ways that Council can support your future growth, contact our Investment Attraction and Business Growth Team via email at invest@whittlesea.vic.gov.au or call **03 9217 2170**.

whittlesea.vic.gov.au/invest

Version updated Dec 2024