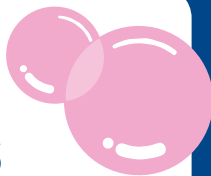


All day activities



Youth Zone

Headspace Activities and Prizes, Lawn Games, DJ Decks

Scouts and Guides Adventure Activities

Jagua Body Art

Virtual Reality Truck

Family Zone

Henna art

Face painting all day

Ageing Well (Blue Gum Room PRACC)

Drop In Tech Cafe

Pet Expo

Groovy Groomers Ponies

Talk with a trainer with Alfoxton Dog Obedience

Explore Whittlesea Zone

Find local experiences and hidden gems

Spin and Win Wheel

Meet the faces behind local businesses

Civic Lawns

Bricks 4 Kids Lego workshops

Tell Your Story

Love Your Neighbourhood Houses

Sustainability Lane

Eco Explorers

Animals of Oz

Emergency Expo Zone

Meet local emergency services

PRACC foyer

Waste to Wonder exhibition



The Community Festival is more than just an event – it's a commitment to a greener, cleaner future!

The City of Whittlesea are using Green My Plate in an effort to reduce waste at this event.

How to Green Your Plate in 3 easy steps...



1

Order your meal

Visit any food or drink vendor and enjoy your meal served on Green My Plate reusable plates, bowls, or mugs.



2

Find a Pink Bin

Once you're done eating and drinking, place your used plate, bowl, or mug into one of the pink bins located around the venue.



3

Green My Plate

We will collect, wash, and recirculate the reusable items for future events, helping to reduce waste and protect our environment.



Water stations

The festival has four convenient water refilling stations, making it easy for you to quench your thirst while reducing plastic waste.

The City of Whittlesea is dedicated to hosting sustainable events. Thank you for helping to reduce our environmental impact.

We would love your feedback!



Scan the QR code and let us know about your experience at today's festival.



Community Festival



Sun 15 March

Free event 11AM UNTIL 5PM





Festival program

TIME	ACTIVITY	LOCATION
11am	Make Scrap Fabric Butterflies	Civic Lawns
	Main Street Funk	Lawn Stage
11.15am	Food Health and You – Energise Me	Ageing Well
11.25am	Nepalese Dance Group	Lawn Stage
11.30am	Bloom!	PRACC Forecourt
	Alfoxtton Dog Agility Show	Pet Expo
11.40am	Zumba by TRAC	Lawn Stage
11.45am	Real Stories, Real Impacts! City of Whittlesea Volunteering	Ageing Well
11.55am	Freddie Gibson	Youth Zone
12pm	Bunktopia	Woodstock Theatre
	More than a Shed – Lalor District Men's Shed	Ageing Well
	City of Whittlesea Community Awards	Lawn Stage
12.45pm	Amber Sindoni	Youth Zone
12.50pm	The Community Garden Flowers	Civic Lawns
1pm	Fan and Dragon Dance – Chinese Friendship Assoc.	Ageing Well
	Junkyard Beats	Yan Yean Theatre
	Quality Used Cars	Lawn Stage
1.30pm	Alfoxtton Dog Agility Show	Pet Expo
1.30pm-2pm	Find your people, find your passion – Whittlesea U3A	Ageing Well
1.35pm	Benjamin Trillado	Youth Zone
1.40pm	Pop-Up Park Choir	Civic Lawns
2pm	Bloom!	PRACC Forecourt
	Dance in a Line, Not Alone – Whittlesea U3A	Ageing Well
	Chikchika	Lawn Stage
2.30pm	Bunktopia	Woodstock Theatre
	Flynn Gurry	Youth Zone
2.40pm	Stone Painting	Civic Lawns
3pm	Horns of Leroy ft. Thndo	Lawn Stage
	Alfoxtton Dog Agility Show	Pet Expo
	Be Aware, Be Prepared, Be Safe – Neighbourhood Watch	Ageing Well
3.20pm	James Vass	Youth Zone
3.30pm	Junkyard Beats	Yan Yean Theatre
4pm	Bloom!	PRACC Forecourt
4.10pm	ALZZY	Youth Zone
4.20pm	Bernadette Novembre	Lawn Stage



Youth Zone

Looking for live music, things to do, and a place to hang out? The Youth Space is where the energy is at.

Drop in across the day to catch live performances from emerging young artists on the Youth Space Stage, jump into games and sport like volleyball and pickleball, get creative with zines, plants, and DJ workshops, or slow things down in the chill-out space with mindfulness sketching, breathwork, and sound baths.

11.55am Freddie Gibson

Melbourne singer-songwriter Freddie Gibson, 18, is a gifted multi-instrumentalist with perfect pitch. Blending timeless influences with an authentic voice, he delivers captivating live sets ahead of his debut releases.

12.45pm Amber Sindoni

Melbourne pop-soul artist Amber Sindoni fuses cinematic storytelling with modern soul. A Monash music graduate and The Voice Australia standout, she's known for powerhouse vocals and emotionally rich performances.

1.35pm Benjamin Trillado

Queer Filipino-Australian artist Benjamin Trillado crafts heartfelt, emotionally honest songs. Based in Naarm, he's shared stages with Boy & Bear and Sarah Blasko, with debut single Glue surpassing 700,000 Spotify streams.

2.30pm Flynn Gurry

Rising Warrnambool artist Flynn Gurry blends indie-folk and pop, fresh from Woodford Folk Festival success and major tours. With new EP Gold and international shows, 2026 marks his breakout year.

3.20pm James Vass

Melbourne artist James Vass blends pop, folk and soul into an emotive sound. After national acclaim on The Voice Australia, he now shares heartfelt original music and compelling live performances.

4.10pm ALZZY

Melbourne soul-pop artist ALZZY blends indie-pop, R&B and jazz with honest songwriting. Formerly with Universal Music Publishing, she now releases her own music exploring mental health, identity and growing up.

Lawn Stage

11am Main Street Funk

Main Street Funk proudly presents an exciting showcase of hip hop, ballet and jazz.

11.25am Nepalese Dance Group

Experience graceful Nepalese cultural dance, featuring expressive hand gestures, rhythmic footwork and colourful traditional dress, performed by our vibrant local community.

11.40am Zumba by TRAC

Join an energetic Zumba session with an instructor from Thomastown Recreation and Aquatic Centre—Latin beats, infectious moves, fun for all!

12pm City of Whittlesea Community Awards

Join us to celebrate residents who have gone above and beyond for our community.

1pm Quality Used Cars

Enjoy live Australian rock and country-inspired music with heartfelt songs, storytelling, and strong stage presence.

2pm Chikchika

Featuring talented Ethiopian and Eritrean artists, Chikchika performs powerful cultural songs with traditional string instruments. Expect uplifting rhythms and meaningful stories of culture, love and peace.

3pm Horns of Leroy ft. Thndo

A high-energy brass band inspired by the street sounds of New Orleans. With bold horns and strong beats, this lively performance will have you dancing and smiling.

4.20pm Bernadette Novembre

Local artist Bernadette Novembre shares original alternative rock music with dreamy, modern sounds and powerful, expressive singing. Enjoy a captivating live performance from a talented emerging artist.

Ageing Well

Blue Gum Room,
PRACC

11am to 4pm at PRACC

Explore support services and fun activities that enhance your well-being and quality of life—all while having fun!

- Try mini golf, 10-pin bowling
- Enjoy entertainment from Dame Cara Lynn
- Drop into our Tech Café with Whittlesea U3A with support for phones, devices, and digital spaces.

11.15am to 11.45am

Food Health and You – Energise Me

11.45am to 12pm

Real Stories, Real Impact!

City of Whittlesea Volunteering

12pm to 12.30pm

More than a Shed – Lalor District Men's Shed

1pm to 1.30pm

Fan and Dragon Dance – Chinese Friendship Assoc.

1.30pm to 2pm

Find your people, find your passion – Whittlesea U3A

2pm to 2.30pm

Dance in a Line, Not Alone – Whittlesea U3A

3pm to 3.45pm

Be Aware, Be Prepared, Be Safe – Neighbourhood Watch

Emergency Expo

11am to 5pm Be Ready, Stay Safe

Step into a fun, hands-on space in the Emergency Expo Zone, where learning meets adventure. Meet local emergency services, discover simple ways to prepare your household, and pick up practical tips for fire season, storms and heatwaves. Kids can enjoy interactive activities and earn their "Emergency Hero" sticker, while parents connect with experts and helpful resources to keep their families safe.

Explore the City of Whittlesea

11am to 5pm at the East Carpark

Discover flavours, stories and hidden gems at the Explore Whittlesea Discovery Zone. Follow the Discover, Taste, Experience Trail to meet local makers and businesses, enjoy bite-sized activities, try the Spin and Win Wheel, and scan QR codes for more adventure ideas. Whether you're chasing family fun, food finds or weekend inspiration, your next local getaway starts here.

Pet Expo

11am to 5pm

If you love animals, you won't want to miss our Pet Expo, a fun, feel-good area packed with ideas, advice and hands-on experiences for the whole family. See impressive dog obedience and training displays in action. Get helpful tips on pet registration, microchipping and keeping your pets safe. Discover products, services and expert advice for furry, feathered and even scaly companions. Enjoy hands-on fun with The Groovy Groomers, where kids can help groom and pat adorable miniature ponies. Come along, learn something new and celebrate the joy pets bring to our lives.

Sustainability Lane

11am to 5pm on the Civic Centre Lawns

Take a stroll down Sustainability Lane and enjoy fun, hands-on activities for the whole family.

Highlights:

- Get up close to Australian wildlife with Animals of Oz.
- **Biodiversity World:** Learn about birds, biodiversity and backyard habitats, plus fun nature play for kids.
- **Waste World:** Learn how to reduce and sort waste, meet some hungry worms and explore a real food and garden waste truck.
- **Climate World:** Talk all things solar, discover smarter energy use and see an electric vehicle in action.

Theatre Shows

Free

11.30am, 2pm and 4pm Bloom!

PRACC Forecourt

A colourful aerial performance inspired by flowers and nature. Watch performers move high above the ground in a beautiful and exciting show filled with strength, movement and transformation.

12pm and 2.30pm Bunktopia

PRACC

Audiences are invited into a world of inventive puppetry from Jeff Achtem of Bunk Puppets. Using everyday household objects, Jeff creates evocative and humorous shadow puppet sketches that delight audiences of all ages.

1pm and 3.30pm Junkyard Beats

PRACC

From junk to funk, ordinary recycled materials are transformed into extraordinary musical instruments, bringing forgotten objects to life in surprising and joyful ways.

Together We Belong

11am to 5pm on the Civic Centre Lawns

Celebrate creativity and community with a vibrant program of hands-on workshops and activities for all ages. Join local artists to create bespoke works for the festival and share your voice in *Stories of Belonging*, a special video project. Across the day, enjoy scrap fabric butterfly making, community garden flower creations and stone painting, each exploring themes of connection and belonging. Meet local Neighbourhood Houses to discover services, opportunities and ways to get involved, and don't miss the Pop-up Park Choir on the Civic Lawn—everyone is welcome to lend their voice and be part of the celebration.