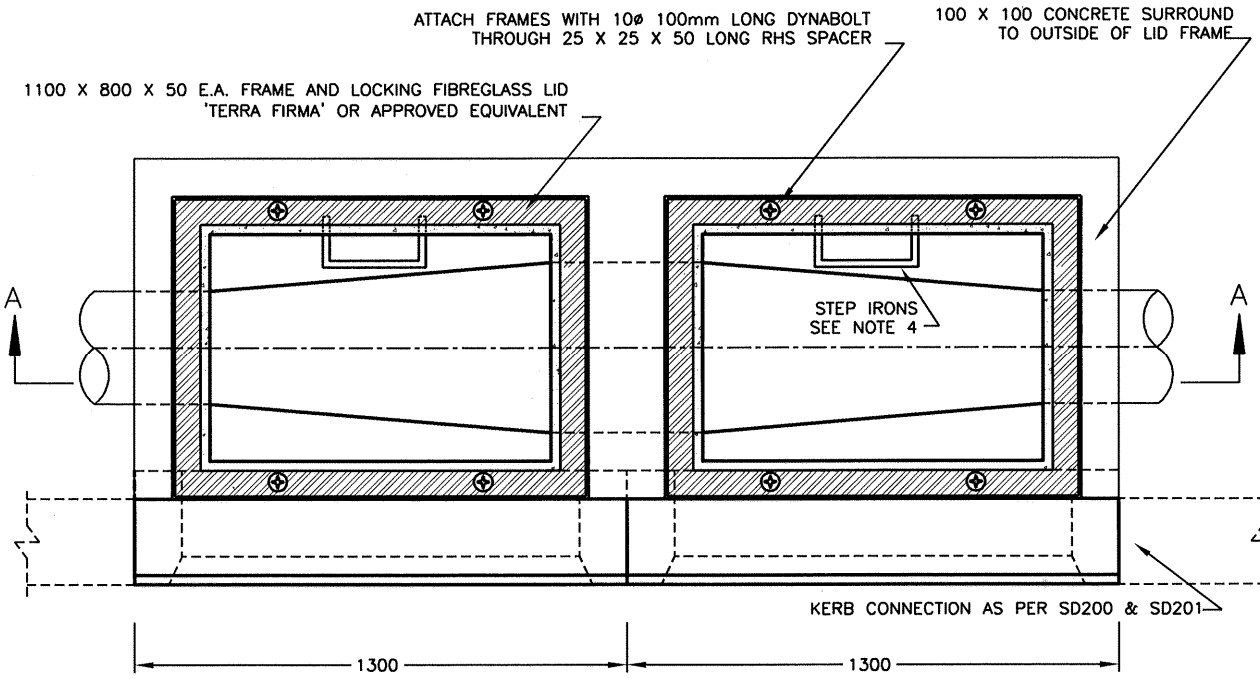


SECTION A-A




TWO SINGLE LINTELS TO BE USED
 B TYPE LINTEL REFER SVC PRODUCTS CODE:15.306 OR APPROVED EQUIVALENT
 SM TYPE LINTEL REFER SVC PRODUCTS CODE: 15.307 OR APPROVED EQUIVALENT

PLAN (Lids Removed)

NOTES

1. Inside dimensions of side entry pits to be 900 x 600 for pipes not exceeding $\phi 450$. Larger pipes require pit haunching as per VicRoads SD1001 to SD1023
2. Pipe centreline to be $\frac{1}{2} \phi$ pipe + 150 behind B.O.K.
3. Pit walls and floor:
 - 150 thick for depth to 1800 & $\phi 450$
 - 200 thick for depth > 1800 or $\phi 450$.
4. Pits > 900 depth to be supplied with step irons - refer to VicRoads SD1041.
5. Subject to superintendent's approval precast pits may be substituted.
6. Surrounding ground within 500mm to be shaped to meet top of pit lid
7. Pit detail to be read in conjunction with SD200, SD201 and SD202

	City of Whittlesea	
EXTENDED SIDE ENTRY PIT		SD 213
APPROVED	DATE 13/10/2005	REV A