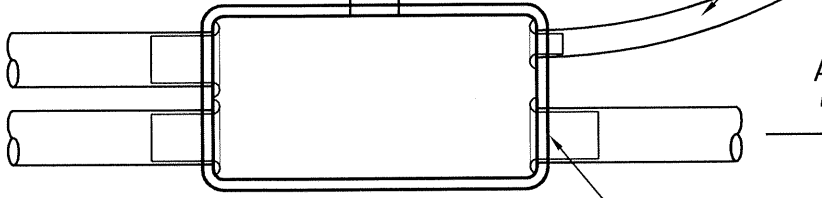


MIN. 100 DIA DRAINAGE PIPE  
AT NOMINATED LOW PITS

PREFABRICATED CONDUIT BEND  
RADIUS AS PER TABLE

Nominal pipe Dia. (mm)	Prefab bend min. radius (mm)	Deflect max. per conduit (mm)
32(35Tel)	640	1500
50	1000	1500
100	3000	1000

A



CONDUIT ENTRY ON SHORT WALL ONLY

PLAN

MEDIUM DENSITY POLYETHYLENE TELECOMMUNICATIONS PIT TYPE P5, P6 OR P8

MEDIUM DUTY CONCRETE COVER AS PER NOTE 3

CORRUGATED PLASTIC GASKET

450 NATURE STRIP MIN.  
600 ROAD PAVEMENT MIN.

"COMMUNICATIONS" WARNING TAPE 100 MM WIDE (MIN) WITH TRACING WIRE. WIRES TO BE CONTINUOUS THROUGH PIT WALLS AND SEALED

SECOND LAYER OF 50Ø OR 100Ø CONDUITS ON P8 PITS ONLY

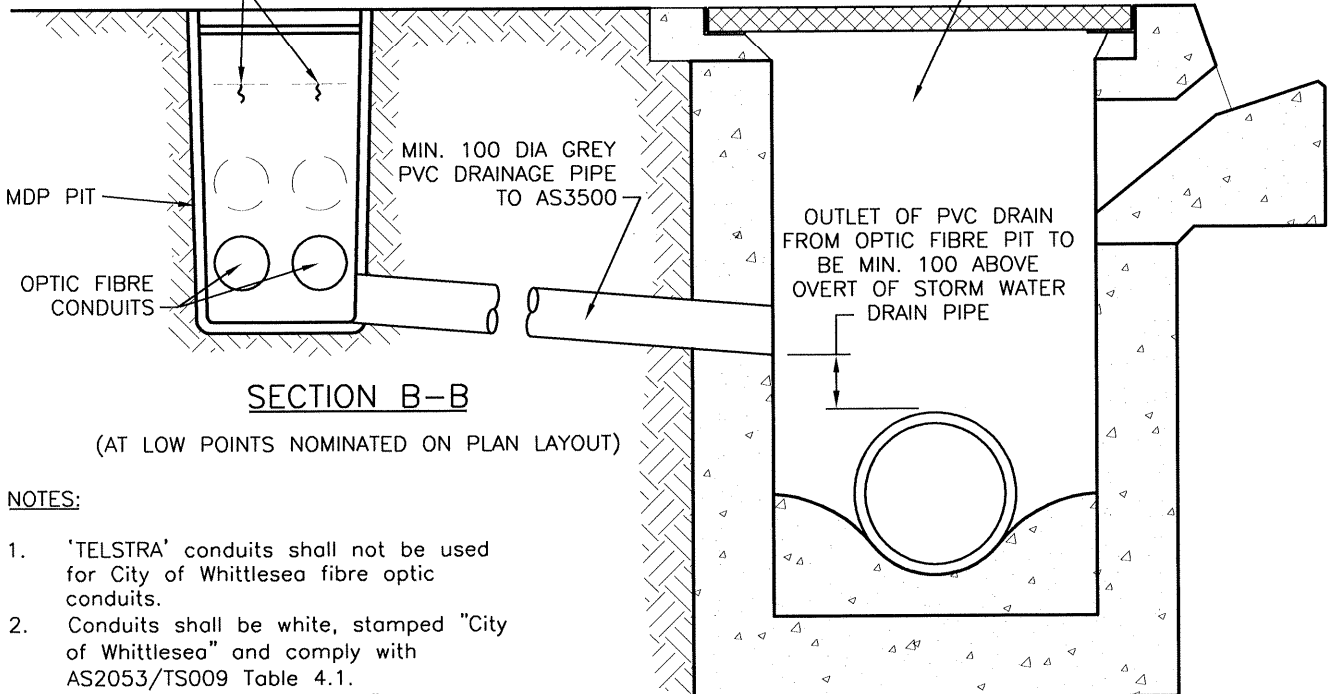
FLANGED ENTRY ON ALL CONDUITS AS PER NOTE 5

MIN. 100 DIA DRAINAGE PIPE AT NOMINATED LOW PITS

SECTION A-A

"COMMUNICATIONS" WARNING TAPE WITH TRACING WIRE

STORM WATER PIT



MIN. 100 DIA GREY PVC DRAINAGE PIPE TO AS3500

OUTLET OF PVC DRAIN FROM OPTIC FIBRE PIT TO BE MIN. 100 ABOVE OVERT OF STORM WATER DRAIN PIPE

SECTION B-B

(AT LOW POINTS NOMINATED ON PLAN LAYOUT)

NOTES:

- 'TELSTRA' conduits shall not be used for City of Whittlesea fibre optic conduits.
- Conduits shall be white, stamped "City of Whittlesea" and comply with AS2053/TS009 Table 4.1.
- Pit lids shall be stamped "City of Whittlesea" - "Optic Fibre"
- Corrugated plastic gasket shall be installed under the concrete lid.
- Flanged conduit connections (Vinidex, BTR or approved equivalent) with rounded surface shall be provided at all conduit to pit connections to avoid cable damage. Flanged entry shall be perpendicular to and flush with pit wall.



City of Whittlesea

OPTIC FIBRE PIT

SD 814

APPROVED

REV. DATE 01/08/2005

REV C