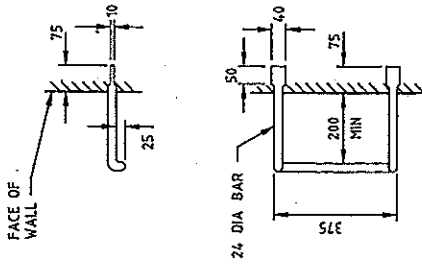


SECTION A-A

PLAN



STEP IRON DETAILS

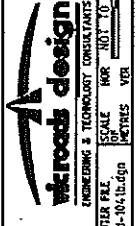
- NOTES:
1. PITS DEEPER THAN 1000 SHALL BE FITTED WITH STEP IRONS.
 2. STEP IRONS SHALL BE LOCATED:
 - DIRECTLY BELOW THE OPENING IN THE COVER.
 - DESIRABLY ON A WALL WITHOUT PIPE OPENINGS.
 - DESIRABLY ON ONE OF THE LONG SIDES OF THE PIT.
 3. STEEL FOR STEP-IRONS SHALL BE STRUCTURAL GRADE 250 TO AS3679/1990 PART 1.
 4. STEP IRONS SHALL HAVE SHARP EDGES ROUNDED AND HOT DIP GALVANIZED AFTER FABRICATION TO AS/NZS 4680
 5. PROPRIETARY STEPS SUCH AS THE GATIC 373 PM POLYPROPYLENE STEPS (OR APPROVED ALTERNATIVE) MAY BE USED. THESE SHALL BE INSTALLED ACCORDING TO THE MANUFACTURERS INSTRUCTIONS.
 6. FOR PRECAST PITS, STEP IRONS SHALL BE LOAD TESTED TO AS4198/1994.

ISSUE	APP'D	DATE	REVISION
B	J.C.	SEPT94	AMENDMENTS TO NOTES 3, 4 & 6. GENERAL NOTE 3.
C	J.B.	1/2/02	IRON STEP HEIGHT NOW 375. ALSO NOTE 4 & 5 AMENDED.
D			
E			

GENERAL NOTES
 1. UNHAUNCHED PITS
 2. HAUNCHED PITS
 3. ALL DIMENSIONS ARE IN MILLIMETRES

SD 101
SD 1021

DESIGNED: PRINCIPAL ROAD DESIGN ENGINEER
 APPROVED: 16.8.94
 CATALOGUE PRED PRODUCT: 2689999V



STANDARD DRAWING
STEP IRONS

DRAWING NO. SD 7041
SHEET NO. B