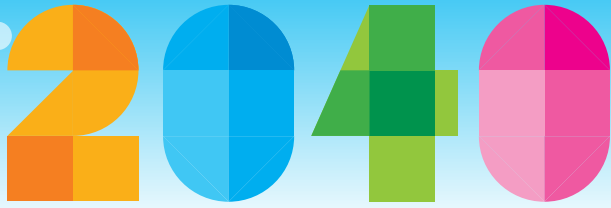


WHITTLESEA



OUR FUTURE



## CLIMATE CHANGE BY 2040

Whittlesea 2040 is your opportunity to help shape the future City of Whittlesea simply by answering two questions:

What do you love about your local area?



My hopes for my local area are:

Have a read of the trends and forecasts we've identified below for life in the year 2040 and tell us how you would like the City of Whittlesea to be.

Climate Change in the future: how can we reduce emissions by 2040?

Electrify our economy and switch to clean fuels

Reduce non-energy emissions and increase carbon storage

Increase our energy efficiency and productivity

Move to a clean electricity supply



### WHAT WE KNOW

Temperatures will rise between **2 and 3 degrees**



More extreme weather with greater fire risk

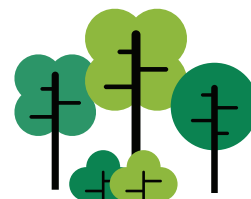


Poorer health for vulnerable people



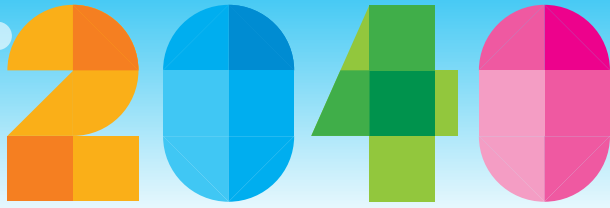
### What can we do?

- Invest in renewables can help create new technology and industries
- Encourage renewable households
- Match the State Government target for zero net emissions by 2050
- Plant additional trees



Share your vision for the future – visit [www.whittlesea.vic.gov.au/whittlesea2040](http://www.whittlesea.vic.gov.au/whittlesea2040)

WHITTLESEA



OUR FUTURE



## COMMUNITY BY 2040

Whittlesea 2040 is your opportunity to help shape the future City of Whittlesea simply by answering two questions:

What do you love about your local area?



My hopes for my local area are:

Have a read of the trends and forecasts we've identified below for life in the year 2040 and tell us how you would like the City of Whittlesea to be.

### WHAT WE KNOW

37 per cent

of people trust government in Australia



80 per cent

of people think local government is important



### Community in the future: what is expected by 2040?

Communities will have more support to address issues themselves



Residents will be more involved in local government



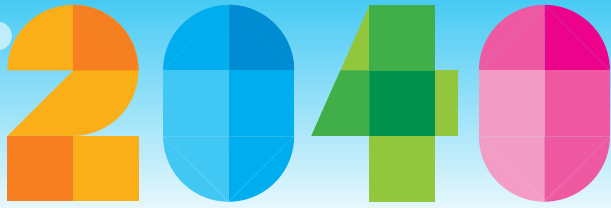
Communities connect more



### What can we do?

- **New ways of** bringing residents together to use their skills to solve challenges and create opportunities
- **Council will find and connect** with these citizen experts
- **Good planning** will build good communities
- **More opportunities** for community participation in decision making

WHITTLESEA



OUR FUTURE



## EMPLOYMENT BY 2040

Whittlesea 2040 is your opportunity to help shape the future City of Whittlesea simply by answering two questions:

What do you love about your local area?



My hopes for my local area are:

Have a read of the trends and forecasts we've identified below for life in the year 2040 and tell us how you would like the City of Whittlesea to be.

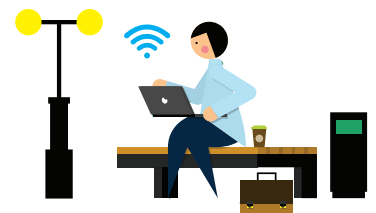
Employment in the future: what is expected in 2040?



Transport options will be important as many residents will still need to travel outside the City of Whittlesea for work

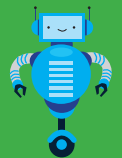
What can we do?

- **New and growing industries** in technology
- People will require access to **co-working spaces** with high speed internet
- **Major activity centres** needed to attract local jobs to the area
- People will need to be **retrained** for jobs of the future



### WHAT WE KNOW

**40** per cent of current jobs will be automated



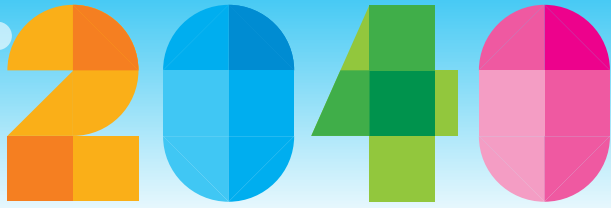
#### Top growth jobs:

- Health care
- Construction
- Education
- Retail



Share your vision for the future – visit [www.whittlesea.vic.gov.au/whittlesea2040](http://www.whittlesea.vic.gov.au/whittlesea2040)

WHITTLESEA



OUR FUTURE



## SERVICES AND INFRASTRUCTURE BY 2040

Whittlesea 2040 is your opportunity to help shape the future City of Whittlesea simply by answering two questions:

What do you love about your local area?



My hopes for my local area are:

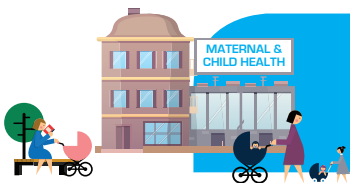
Have a read of the trends and forecasts we've identified below for life in the year 2040 and tell us how you would like the City of Whittlesea to be.

Services and Infrastructure in the future: what we'll need by 2040?

137 new sports facilities



52 new maternal and child health centres, kindergartens, primary and secondary schools



64 community facilities



What can we do?

- **Sharing buildings** and partnering with similar organisations to deliver services
- **Technology upgrades** needed in buildings
- **Finding funding from new sources** such as the private sector, developers, levies
- **Cities will become smarter** – technology will help us be more efficient and flexible

WHAT WE KNOW

Currently **8,000** new residents a year



Population of **382,900** by the end of 2040



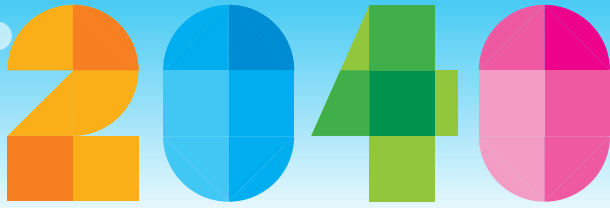
More than **60,000** new dwellings by 2040



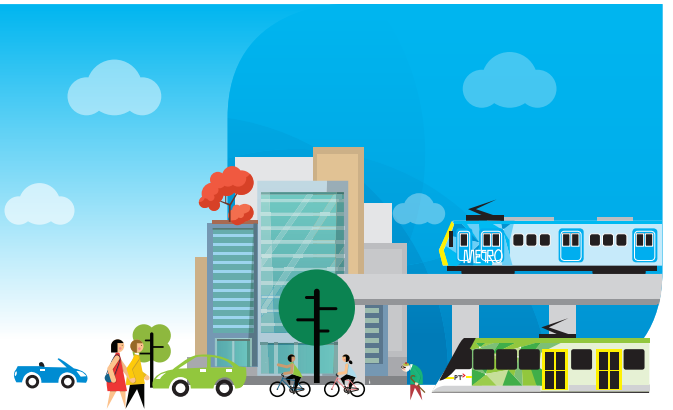
Share your vision for the future – visit [www.whittlesea.vic.gov.au/whittlesea2040](http://www.whittlesea.vic.gov.au/whittlesea2040)



WHITTLESEA



OUR FUTURE



## TRANSPORT BY 2040

Whittlesea 2040 is your opportunity to help shape the future City of Whittlesea simply by answering two questions:

What do you love about your local area?

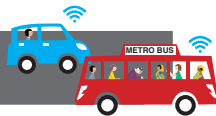


My hopes for my local area are:

Have a read of the trends and forecasts we've identified below for life in the year 2040 and tell us how you would like the City of Whittlesea to be.

### Transport in the future: what is expected by 2040?

More driverless cars and autonomous buses



Decreased waiting times for public transport due to technological advances

Networked technology will allow for increased use of ride share apps



### What can we do?

- **Mixed use places** where people live and access a range of facilities, services and jobs within walking and cycling distances
- Continue to **lobby for more transport** options
- **Technology will be** increasingly a part of transport
- **Community transport** will help support the community



### WHAT WE KNOW

**86** per cent of people drive to work



There will be **113,000** additional cars



**90** per cent increase in demand for public transport

